

# SUONIAMO

1 ninna nanna

2 dolce ricordo

3 canzoncina

4 canto popolare

5 melodia ungherese

6 nel prato

7 marcetta

8 il grillo canta

9 sulla barca

10 cucù

11 almanacco

12 il cosacco

13 canto dell'est

14 gira gira

15 danza medievale

16 ricordo d'estate

17 nel bosco

18 canto nero

19 holirà

20 danza

21 rondò

22 contraddanza

23 aria

24 santa lucia

# NINNA NANNA



BASE E GUIDA

BASE

INDICE

# DOLCE RICORDO



BASE E GUIDA

BASE

INDICE

# CANZONCINA



BASE E GUIDA

BASE

INDICE

## CANTO POPOLARE



BASE E GUIDA



BASE



INDICE

## MELODIA UNGHERESE



BASE E GUIDA

BASE

INDICE

# NEL PRATO

Musical score for 'NEL PRATO' in 3/4 time, consisting of four staves of music. The first staff starts with a green arrow pointing to the first note and a green arrow pointing down to the first measure. The second staff starts with a green arrow pointing to the first note. The third staff starts with a green arrow pointing to the first note. The fourth staff starts with a green arrow pointing to the first note. The score is written in treble clef with a 3/4 time signature.

BASE E GUIDA

INDICE

BASE

nov 25-17.04



# MARCETTA



BASE E GUIDA

BASE

INDICE



## IL GRILLO CANTA



BASE E GUIDA



BASE



INDICE

## SULLA BARCA



BASE E GUIDA

BASE

INDICE

# CUCU'



I<sup>a</sup> VOLTA

BASE E GUIDA

BASE

INDICE

# ALMANACCO

la prima volta la  
pausa è sostituita  
dall'inizio

BASE E GUIDA

BASE

INDICE

# IL COSACCO



BASE E GUIDA

BASE

INDICE

# CANTO DELL'EST



 BASE E GUIDA

 BASE

INDICE

# GIRA GIRA

→ 4

→ 5

→ 9

→ 13

BASE E GUIDA

INDICE

BASE

# DANZA MEDIEVALE



 BASE E GUIDA

INDICE

 BASE



# RICORDO D'ESTATE



BASE E GUIDA

BASE

INDICE

## NEL BOSCO



BASE E GUIDA

BASE

INDICE

# CANTO NERO



BASE E GUIDA

BASE

INDICE

# HOLIRA'



 BASE E GUIDA

 BASE

INDICE

# DANZA



 BASE E GUIDA

 BASE

INDICE

# RONDO'



 BASE E GUIDA

 BASE

INDICE

## CONTRADDANZA

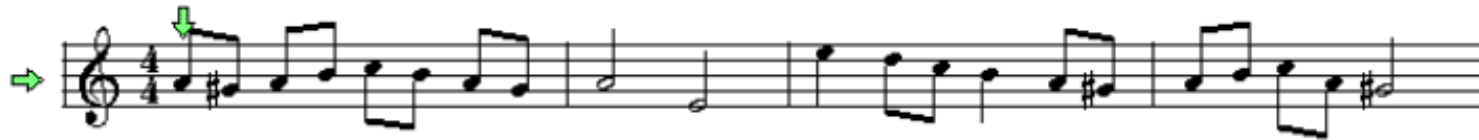


BASE E GUIDA

BASE

INDICE

# ARIA



BASE E GUIDA

BASE

INDICE



## SANTA LUCIA

The image displays two staves of musical notation for the piece "Santa Lucia". The first staff is in 3/4 time, featuring a treble clef, a key signature of one flat (B-flat), and a melody of eighth and quarter notes. A green arrow points to the first note, and a green downward arrow points to the second measure. The second staff is in 3/4 time, featuring a treble clef, a key signature of one flat, and a bass line of quarter notes. A green arrow points to the first note, and a small '9' is written above the first measure.

BASE E GUIDA

BASE

INDICE